



FOR IMMEDIATE RELEASE:

ATON DRILLS 36M @ 12.47 G/T GOLD IN FIRST DRILL HOLES AT RODRUIIN, FROM 5M DEPTH

Vancouver, October 1, 2018: Aton Resources Inc. (AAN: TSX-V) (“Aton” or the “Company”) is pleased to update investors with the results of the first 3 drill holes from the reverse circulation percussion (“RC”) drilling programme at the Rodruin prospect within the Company’s 100% owned Abu Marawat Concession (“Abu Marawat” or the “Concession”), located in the Eastern Desert of Egypt.

Highlights:

- Assay results are now available from the first 3 RC drill holes, ROP-001 to ROP-003, completed at the Aladdin’s Hill area at Rodruin. Drilling is ongoing at Rodruin with all holes to date having intersected logged mineralisation and most having intersected ancient underground mine workings;
- **Drill hole ROP-003 has returned a mineralised intersection of 36m @ 12.47 g/t Au from 5m downhole depth** (or 36m @ 5.38 g/t Au, using a 30 g/t Au top cut);
- Drill hole ROP-003 has returned 2 separate very high grade intersections of **4m @ 63.15 g/t Au** from 9m depth (or 4m @ 15.40 g/t Au, using a 30 g/t Au top cut), and **3m @ 40.67 g/t Au** from 22m depth (or 3m @ 19.24 g/t Au, using a 30 g/t Au top cut), within the overall mineralised zone. Individual sample grades over metre intervals include **221 g/t Au** and **94.3 g/t Au**. These results confirm the presence of very high grade zones of mineralisation with coarse gold at Aladdin’s Hill, as indicated by previous surface and underground sampling;
- Drill hole ROP-002 has returned an overall mineralised intersection of **59m @ 0.90 g/t Au** from surface;
- Drill hole ROP-001 has returned mineralised intersections of **13m @ 1.02 g/t Au** from 10m depth, and **5m @ 2.97 g/t Au** from 50m depth.

“These results really speak for themselves. The results correlate very well with our mapping and channel sampling as well as the previous surface grid and underground sampling at Aladdin’s Hill, and we are very encouraged by them.” said **Mark Campbell, President and CEO**. *“This ancient mining area, which we now call Rodruin, had been lost until we found it last December. This discovery was no small accomplishment, as the site is located in very rugged, isolated and steep terrain. Our regional exploration programme initiated last year over our Abu Marawat Concession area was the genesis of the Rodruin discovery. The ancient high grade tailings dumps at Eradiya East, approximately 3km from Rodruin and the archaeological evidence of technologically advanced ancient processing sites seen in the surrounding areas, led us to seek the source of what was apparently potentially very high grade ore being mined by the ancients. Through the use of spectral imaging and good old boots on the ground, we were able to discover this large ancient mining site. Subsequently, we have built a 4.5km road up the side of the mountain, and are continuing to construct drill access roads and pads. Our mapping and sampling programmes have assisted us in developing our geological interpretation that Rodruin has the potential to be a very significant system of gold mineralisation, including some very high grade zones within it. We believe that the initial results from our ongoing first pass drilling programme appear to be confirming this potential.”*

RC drilling at Rodruin

RC drilling commenced at Rodruin on August 27, 2018 (see news release dated August 28, 2018) and 11 holes

have been completed to date, ROP-001 to ROP-011. Aton has contracted Capital Drilling to undertake the RC drilling using a track-mounted Gemrok MP-1000 multi-purpose rig, which is capable of both RC and diamond drilling (see Figure 1), operating with a large, truck-mounted 500psi/1300cfm compressor. The first phase of drilling is planned to consist of approximately 4,000 to 6,000 metres of RC drilling, initially testing the main zone of ancient workings and mapped mineralisation in the Aladdin's Hill area, before moving on to other mineralised areas.



Figure 1: Capital Drilling's Gemrok MP-1000 multi-purpose rig #256 drilling on hole ROP-001 at Aladdin's Hill

Drilling commenced at Aladdin's Hill at the western end of the Rodruin prospect (see Figure 2). Surface rock chip sampling on a 5m x 5m grid over the highly altered host rock and ancient workings at Aladdin's Hill has recently returned **an average grade at surface of 3.75 g/t Au**, with individual samples grading up to 18.75 g/t Au (see news release dated September 4, 2018), and underground sampling at Aladdin's Hill has returned high grade samples to depths of c. 40m below ground level, grading up to 15.45 g/t Au (see news release dated April 16, 2018). Surface channel sampling around Aladdin's Hill (see Figure 2) has recently returned significant and wide mineralised intersections including **62.6m @ 2.34 g/t Au and 1.49% Zn** (profile ROC-003), **64.9m @ 2.29 g/t Au** (profile ROC-005), and **65.3m @ 2.84 g/t Au and 5.26% Zn** (profile ROC-009), see news releases dated September 12, 2018 and September 24, 2018. Abundant visible gold in highly altered rocks has also been identified in outcrop at Aladdin's Hill.

Drill holes were drilled at c. 140mm diameter, and the bulk percussion chip samples were collected directly into large plastic bags from the cyclone every metre, numbered with the hole number and hole depths by the drill crew, and laid out sequentially at the drill site (see Figure 1). RC chips were logged onsite by a senior Aton geologist. The bulk 1m samples were weighed, and subsequently riffle split through a 3-tier splitter onsite by Aton field staff to produce an approximately 1/8 split, which was collected in cloth bags, numbered and tagged with the hole number and depth. The reject material from this initial bulk split was re-bagged, labelled and tagged, and the bulk reject samples will be stored and retained on site at Rodruin.

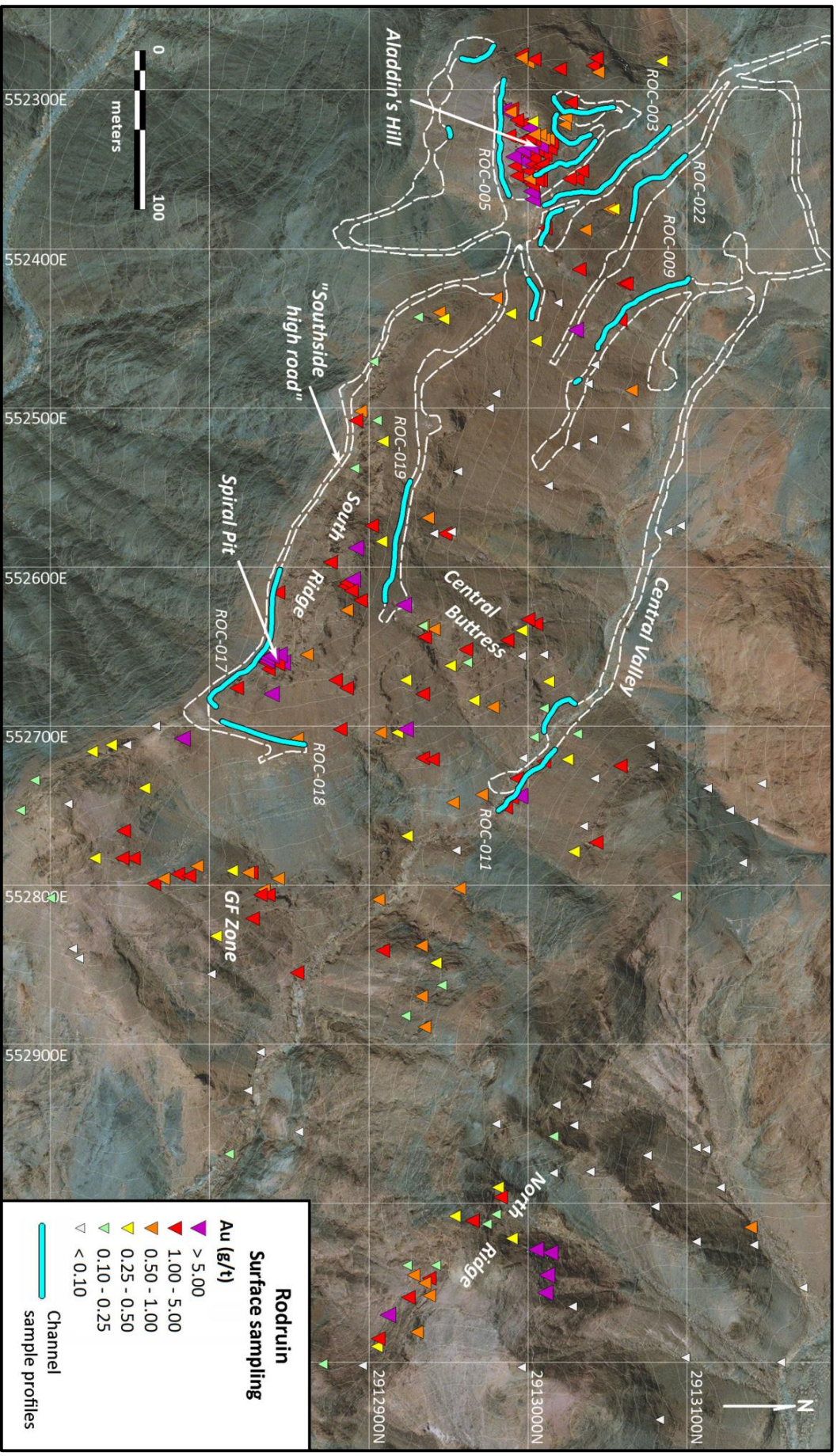


Figure 2: Surface sampling plan of the Rodruin prospect, with showing location of individual point samples and channel sample profiles, and drill access roads and pads (10m contour intervals)

All the 1m split samples were weighed again, and the samples selected for assay were riffle split onsite, typically a further 3-4 times using a smaller lab splitter, to produce a nominal c. 250-500g sample split for dispatch to the assay laboratory. All samples were sent for assay from holes ROP-001 to ROP-003. The laboratory splits were allocated new sample numbers. QAQC samples were inserted into the sample runs dispatched to the assay laboratory at a nominal rate of 1 duplicate sample for every 10 drill samples, 1 blank sample every 10 samples, and 1 standard sample of a certified reference material every 40 samples. Reject material from the 1m samples after the laboratory split had been taken, and any unused 1m splits will be retained at the Company's Hamama laboratory for future reference purposes, as and when required.

The selected c. 250-500g split samples were shipped to ALS Minerals at Rosia Montana, Romania for analysis. Samples were analysed for gold by fire assay with an atomic absorption spectroscopy ("AAS") finish (analytical code Au-AA23); and silver, copper, lead and zinc with an *aqua regia* digest followed by an AAS finish (analytical code AA45). High grade gold samples (>10 g/t Au) were re-analysed using analytical code Au-AA25 (also fire assay with an AAS finish); and Au-GRA21 (fire assay with a gravimetric finish) for samples which returned gold grades >100 g/t, when required. High grade Ag and base metal samples (Ag >100 g/t, and Cu, Pb, and Zn >10,000ppm or >1%) were re-analysed using the ore grade technique AA46 (also an *aqua regia* digest followed by an AAS finish).

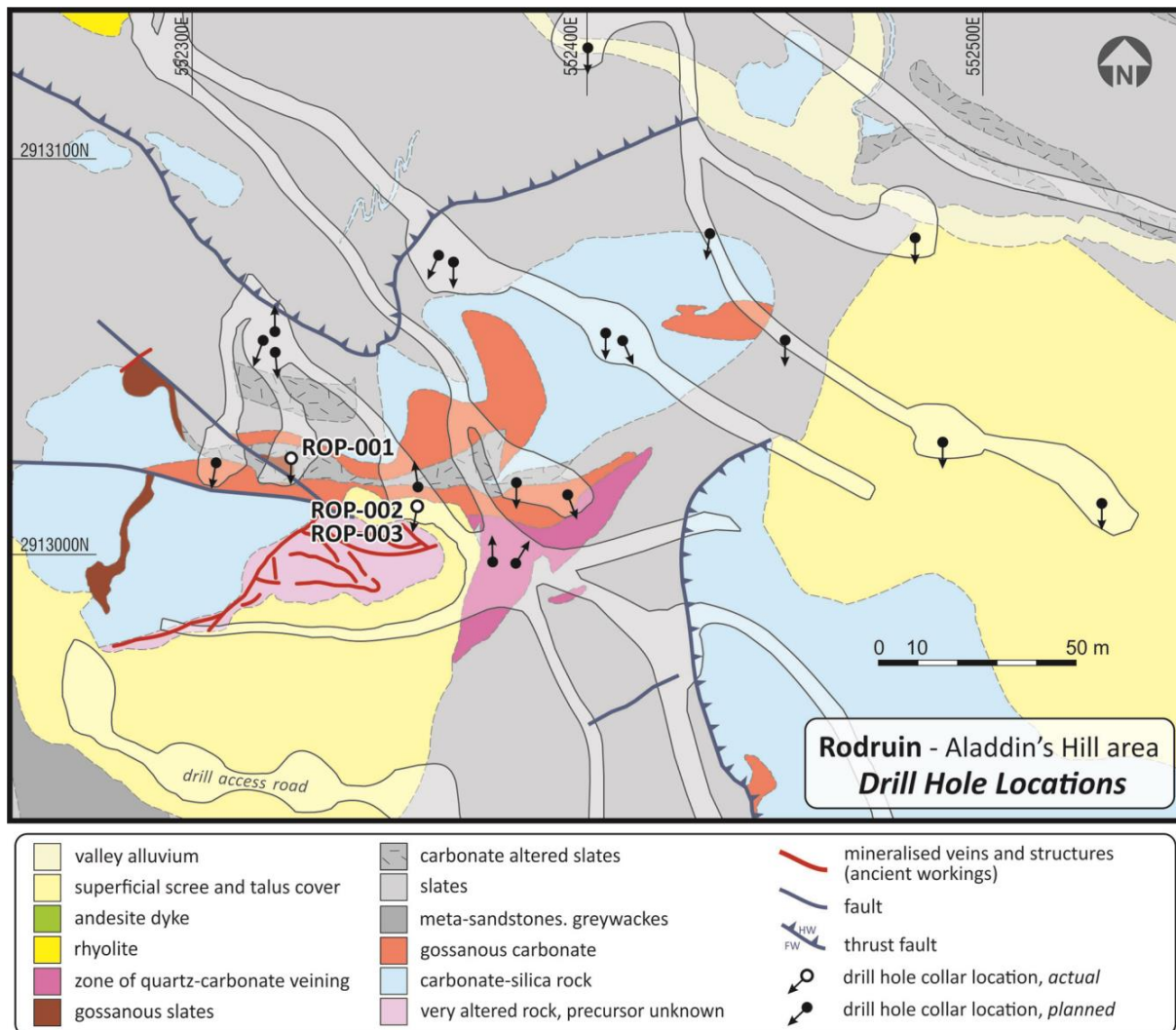


Figure 3: Schematic geological plan of the Aladdin's Hill area, showing locations of drill holes ROP-001 to ROP-003

Results of drill holes ROP-001 to ROP-003

Assay results are now available for the first 3 holes, which were drilled on a southerly orientation at Aladdin's

Hill to test the zone of highly altered rocks with associated underground workings (see Figure 3). Details of the collar locations are provided in Table 1. Significant gold mineralisation was intersected in all 3 holes, and details of the mineralised intersections are provided below in Table 2.

Hole ID	Collar co-ordinates ¹			Dip ²	Azimuth ²	EOH depth (m)	Comments
	X	Y	Z				
ROP-001	552325	2913024	789	-55	180	110	Ancient workings between 0-4m and 48.5-49.5m
ROP-002	552352	2913017	787	-75	185	150	Ancient workings between 51-52m
ROP-003	552352	2913017	787	-55	185	120	Ancient workings between 24-25m, low recovery
<i>Notes:</i> 1) Estimated co-ordinates, subject to final survey pickup 2) Subject to final downhole survey 3) All co-ordinates are UTM (WGS84) Zone 36R							

Table 1: Collar details of RC drill holes ROP-001 to ROP-003

The first holes drilled at Rodruin all tested mineralisation and ancient workings in the immediate Aladdin's Hill area, with the first 3 holes all intersecting significant Au(-Zn-Ag-Cu-Pb) mineralisation. Narrow ancient underground workings and stopes, less than 1m in width, were intersected in all 3 holes at depth, and ROP-001 was apparently collared in a larger infilled working intersected from surface (see Table 1). Holes ROP-002 and ROP-003 were collared from the same location with both intersecting wide downhole intersections of mineralisation, predominantly hosted by a pink to brown, strongly phyllic altered granular quartz-mica-iron oxide rock, believed to be after meta-sediments or greywackes. Mineralisation is distributed throughout the bulk of the intensely phyllic altered host rock. Structurally controlled higher grade zones are localised within this highly altered rock, and are often enriched in copper. These zones have been partially exploited by the ancient miners, including the large "Aladdin's Slot" stope which has been followed and sampled underground to a depth of c. 40m below ground level, and over an E-W strike length of at least 40m (see news release dated April 16, 2018). Mineralisation within the altered rocks consists of a complex assemblage of native gold, occasionally very coarse with grains up to 2mm in size, associated with zinc, copper, lead and arsenic supergene minerals. The transition to fresh rock in the drill holes is quite deep, and is strongly suggestive of preferential weathering down sulphide-rich mineralisation. A second, different style of predominantly Au-Zn mineralisation is associated with gossanous carbonates and slates, notably close to lithological contacts between these two rock types.

Drill hole ROP-001 intersected gossanous carbonate-hosted Au-Zn mineralisation near surface (**13m @ 1.02 g/t Au**, see Table 2) and what is believed to be an extension of the high grade Aladdin's Slot underground workings into the carbonate unit, at approximately 50m down hole (**5m @ 2.97 g/t Au**).

Drill holes ROP-002 and ROP-003 both intersected broad downhole zones of mineralisation (see Table 2) associated with the highly altered rock hosting the main zone of underground workings at Aladdin's Hill. True mineralised widths cannot be ascertained at this early stage of drilling. The high grade overall intersection in ROP-003 (**36m @ 12.47 g/t Au**) includes 2 very high grade zones (**4m @ 63.15 g/t Au** and **3m @ 40.67 g/t Au**), one of which was associated with a narrow underground stope. These very high grade assays and zones are believed to be representative of the mineralisation present at Aladdin's Hill, which was the main target of the ancient miners in this immediate area, as evidenced by the coincidence of the second very high grade zone with a narrow ancient stope.

Aton is very encouraged by the initial drilling results from Rodruin, and believes that the results vindicate and confirm the Company's interpretation, developed since the initial discovery of Rodruin in December 2017, that the Aladdin's Hill area in particular, and the entire Rodruin area in general, has the potential to host discrete zones of very to exceedingly high grade gold mineralisation, associated with abundant coarse gold, located within a large and areally very significant gold mineralised system. The Company is currently working

to develop as many additional areas away from Aladdin's Hill as practically possible for drill testing during the ongoing initial Phase 1 RC drilling programme, including the Spiral Pit, as well as gossanous mineralisation on the Central Buttress and at the GF Zone (see Figure 2).

Hole ID	Hole depth (m)	Intersection (m)			Au (g/t) (uncut)	Au (g/t) (cut) ¹	Ag (g/t)	Cu (%)	Pb (%)	Zn (%)
		From	To	Interval						
ROP-001	110	10	23	13	1.02	-	5.1	0.03	0.01	0.72
	and ²	47	50	3	0.08	-	15.3	2.34	0.09	5.52
	and	50	55	5	2.97	-	9.0	0.07	0.07	0.15
	and ²	55	57	2	0.08	-	4.3	0.25	0.00	3.54
ROP-002	150	0	59	59	0.90	-	8.6	0.07	0.05	0.85
	<i>incl.</i>	0	24	24	0.93	-	4.6	0.04	0.05	1.43
	<i>and incl.</i>	41	59	18	1.28	-	13.3	0.09	0.04	0.06
	and ²	59	64	5	0.07	-	2.2	0.24	0.00	3.38
	and	92	95	3	1.28	-	17.7	0.01	0.00	0.01
ROP-003	120	5	41	36	12.47	5.38	9.3	0.20	0.20	0.19
	<i>incl.</i>	9	13	4	63.15	15.40	27.0	0.10	0.53	0.08
	<i>incl.</i>	9	10	1	221.0	30.0	69.3	0.16	1.66	0.08
	<i>and incl.</i>	22	25	3	40.67	19.24	13.0	0.31	0.21	0.14
	<i>incl.</i>	22	23	1	94.3	30.00	20.6	0.09	0.28	0.12
	and	49	54	5	1.15	-	6.3	0.12	0.04	0.10
	and ²	56	59	3	0.08	-	3.0	0.14	0.00	1.94
Notes:										
1) High grade Au assays >30 g/t top cut to 30 g/t Au										
2) Zn intersections based on a nominal cutoff grade of 1% Zn										
3) Au intersections based on a nominal cutoff grade of 0.5 g/t Au										
4) Inclusion of sub-grade, but still mineralised, internal waste intervals in Au intersections is partially determined by geological considerations, as well as width										

Table 2: Mineralised intersections from RC drill holes ROP-001 to ROP-003

Activity Update

- Construction of drill access roads and pads is ongoing at Rodruin to support the current Phase 1 RC drilling programme, with roads being constructed and in places widened to allow access to mineralisation close to the Spiral Pit, as well as high on the Central Buttress of the South Ridge and the GF Zone at the eastern end of the South Ridge (see Figure 2). 3 excavators are currently working onsite to maximise the amount of drill positions available during the Phase 1 RC drilling programme.
- Channel sampling of mineralisation exposed in access roads is ongoing (see Figure 2), with new profiles sampling mineralisation exposed near the Spiral Pit (ROC-018), high on the Central Buttress (ROC-019), and on the intermediate drill access road between profiles ROC-003 and ROC-009 (ROC-022, currently in progress). Further samples have been dispatched from site, and assay results will continue to be released when they become available.

Rodruin

The Rodruin prospect was discovered in December 2017 by Aton geologists (see news release dated December 14, 2017), and is located approximately 18km east of the Company's Hamama West mineral deposit (see Figure 4). Field mapping and sampling has indicated the presence of ancient mine workings and extensive gold mineralisation over an area of at least 700m x 400m at surface. Abundant visible gold has been identified in hand specimens from surface outcrops, and ancient dumps and underground workings, with individual selective grab samples assaying up to 321 g/t Au. The main series of extensive ancient underground

workings in the Aladdin's Hill area has also been sampled to a depth of approximately 40m below ground level, indicating continuation of the surface mineralisation at depth (see news releases dated February 6, 2018, March 5, 2018 and April 16, 2018), and drilling has now confirmed the presence of high grade gold mineralisation with individual samples returning assays of up to 221 g/t Au over metre intervals. Underground workings at the Spiral Pit have been sampled to a depth of 12-15m below ground level, returning assays of up to 35.3 g/t Au and 37.9 Zn (see news release dated August 7, 2018).

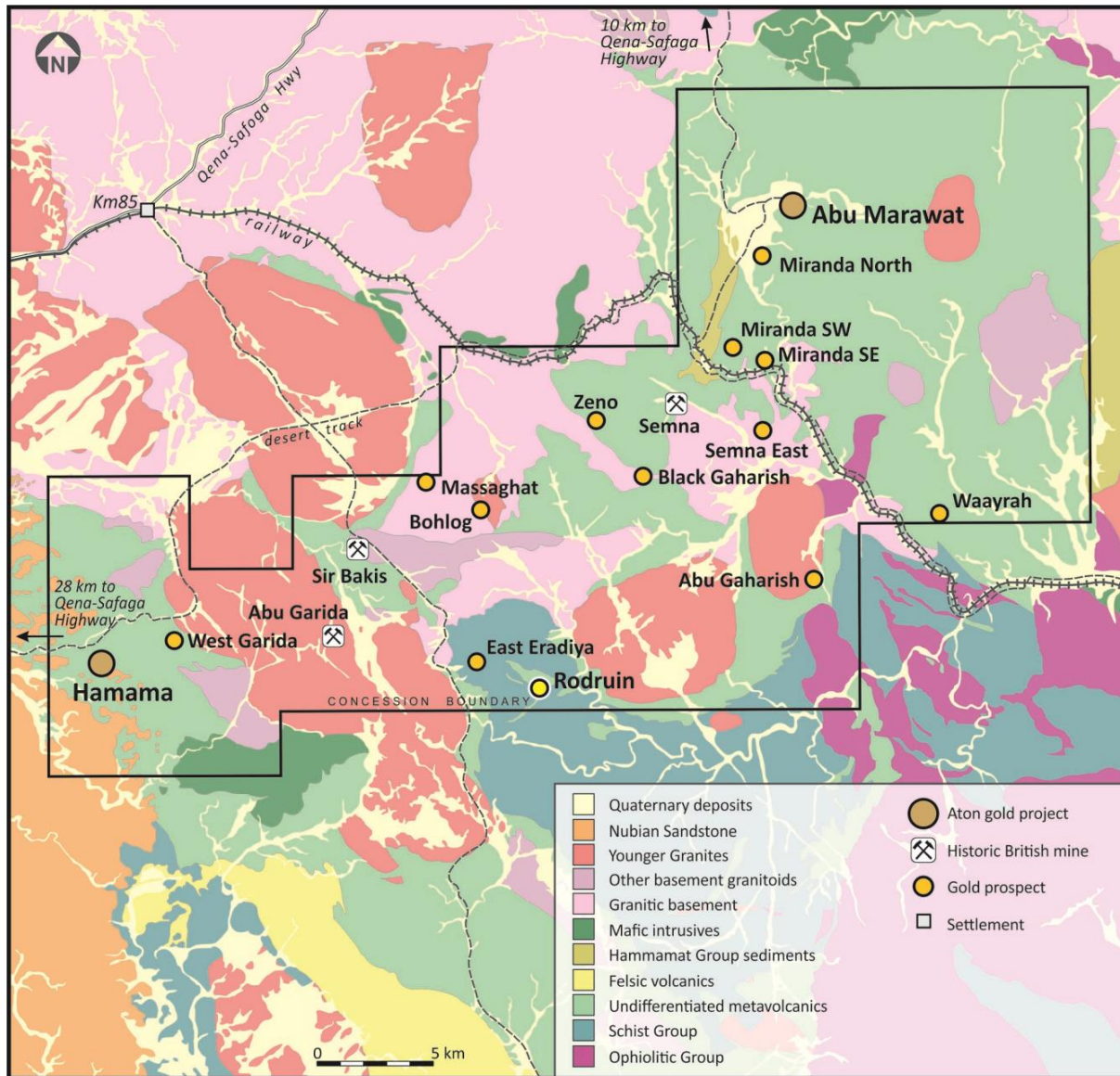


Figure 4: Abu Marawat regional geology, showing the location of the Rodruin prospect

About Aton Resources Inc.

Aton Resources Inc. (AAN: TSX-V) is focused on its 100% owned Abu Marawat Concession (“Abu Marawat”), located in Egypt’s Arabian-Nubian Shield, approximately 200km north of Centamin’s Sukari gold mine. Aton has identified a 40km long gold mineralised trend at Abu Marawat, anchored by the Hamama deposit in the west and the Abu Marawat deposit in the east, containing numerous gold exploration targets, including three historic British mines. Aton has identified several distinct geological trends within Abu Marawat, which display potential for the development of RIRG and orogenic gold mineralisation, VMS precious and base metal mineralisation, and epithermal-IOCG precious and base metal mineralisation. Abu Marawat is over 738km² in size and is located in an area of excellent infrastructure; a four-lane highway, a 220kV power line, and a water pipeline are in close proximity.

Qualified Person

The technical information contained in this News Release was prepared by Javier Orduña BSc (hons), MSc, MCSM, DIC, MAIG, SEG(M), FGS, Exploration Manager of Aton Resources Inc. Mr. Orduña is a qualified person (QP) under National Instrument 43-101 Standards of Disclosure for Mineral Projects.

For further information regarding Aton Resources Inc., please visit us at www.atonresources.com or contact:

Mark Campbell

President and Chief Executive Officer

Tel: +202-27356548

Email: mcampbell@atonresources.com

Note Regarding Forward-Looking Statements

Some of the statements contained in this release are forward-looking statements. Since forward-looking statements address future events and conditions; by their very nature they involve inherent risks and uncertainties. Actual results in each case could differ materially from those currently anticipated in such statements.

Neither TSX Venture Exchange nor its Regulation Services Provider (as that term is defined in policies of the TSX Venture Exchange) accepts responsibility for the adequacy or accuracy of this release.